

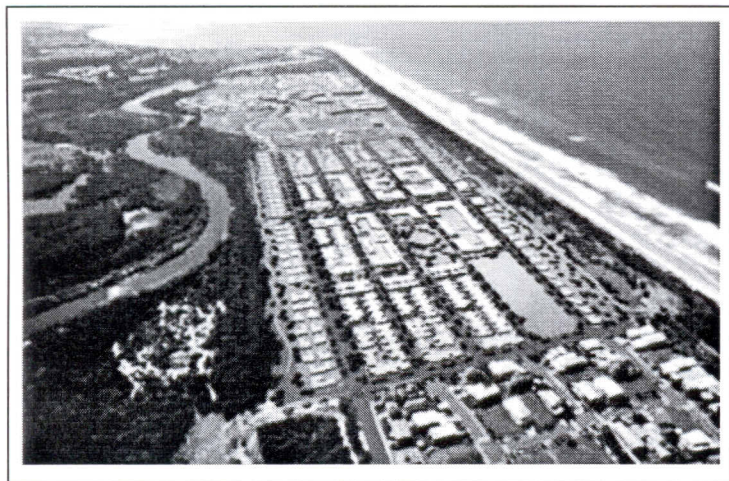
[Home](#) | [RESIDENTIAL](#) | **Seaside estate sails ahead in sustainability**

# Seaside estate sails ahead in sustainability

[PropertyReview.com.au](#)

27/10/2010 03:24:00

Font size: - +



**THE Tweed's \$750 million Seaside estate has become the first coastal community in New South Wales to achieve a rating under the Urban Development Institute of Australia's EnviroDevelopment scheme.**

EnviroDevelopment ratings are awarded to projects leading in

sustainable design including protecting and preserving water, energy, waste, eco-systems, materials and the community.

Developments can be awarded up to six enviro 'leaves'. Seaside has been awarded a four 'leaf' rating.

Marketing director Zel Creswick said gaining EnviroDevelopment certification was a major step forward in cementing Seaside's reputation as one of Australia's foremost eco-friendly communities.

He added that as construction advances, Seaside will also be aiming to achieve a rating for the efficient use of building materials and waste.

"Although Seaside is in the infancy of construction, we have already commenced work on a number of sustainable initiatives," he continued.

To help preserve the local eco-system, Seaside is undertaking one of the most extensive landscaping projects in south-east Queensland and northern New South Wales, with 55,000 native trees planted across the site, and another 20,000 still to be planted over the coming months.

Seaside Living homes will be designed to reduce energy and water consumption by at least 55% compared to the average abode, by using eco-features like 4,000 litre rainwater tanks and clean-burning Kleenheat liquid petroleum gas for heating and electricity.

A limited number of Seaside Living house and land packages are available from \$675,000, with home sites also available from \$335,000.

Seaside is being developed at the heart of the popular \$11.5 billion New Tweed Coast residential and resort strip and will comprise a village centre and retail precinct, tourist accommodation, home sites and medium density homes and apartments for an ultimate population of up to 2,000 people.

PropertyReview.com.au



For you

ROLLOVER TO OPEN

Use your own money wherever Visa's accepted

ANZ debit

4800 1234 5678 9010

00/00 00/00 DOMINIC CITIZEN

VISA A A

Open now

ANZ